

# Member's Only Discounts! EZ Play Songbooks

October 2011

## All-Time Latin Favorites

Regular Price \$7.95

Members Receive a 25% Discount

### E-Z Play Today Volume 141

17 songs, including: *Call Me* • *The Girl from Ipanema* • *Green Eyes* • *My Shawl* • *One Note Samba* • *Perhaps, Perhaps, Perhaps* • *Poinciana* • *Return to Me* • *So Nice (Summer Samba)* • *Yellow Bird*.



Use L.I.F.E. code: LL10

Hal Leonard songbook code: 100290

November 2011

## Love That Latin Beat

Regular Price \$7.95

Members Receive a 25% Discount

### E-Z Play Today Volume 269

20 songs, including: *Amapola* • *Besame Mucho* • *The Breeze and I* • *The Girl from Ipanema* • *The Look of Love* • *Mambo Jambo* • *Meditation* • *Never on Sunday* • *What a Diff'rence a Day Made* • and more.



Use L.I.F.E. code: LL11

Hal Leonard songbook code: 100062

To order: visit [www.musicdispatch.com](http://www.musicdispatch.com), or call 1-800-637-2852 Please note, there is a shipping and handling charge.

**NEW L.I.F.E. MEMBERS - Use Member #37300 for Member Only Songbook Discounts**

chapter info: 866-955-LIFE (5433)  
chapter email: [chapterpres@lowrey.com](mailto:chapterpres@lowrey.com)  
member info: 866-965-LIFE (5433)  
member email: [lifepres@lowrey.com](mailto:lifepres@lowrey.com)  
web: [www.lowrey.com](http://www.lowrey.com)

Lowrey LIFE  
847 N. Church Ct.  
Elmhurst, IL 60126



PRESORTED  
STANDARD  
U.S. POSTAGE  
PAID  
TINLEY PARK, IL  
PERMIT NO. 253



# L.I.F.E. Style

October 2011

## A Tribute to Dennis Awe!

The accomplishments of Dennis Awe- musical, personal, and professional, could easily fill a series of encyclopedias. We can no way begin to list the achievements or express our wholehearted appreciation for all he has done for us and taught to us.

We can, however, share the passing of a momentous date in history. On August 23, 1961, Dennis Awe played his very first concert as a Lowrey Artist. The bulletin announcing the concert is pictured to the right along with a photo of Dennis from 1961.

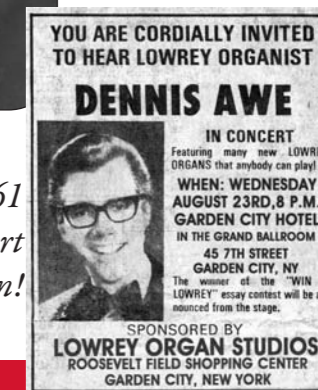
Thank you Dennis. We all eagerly look forward to your next Lowrey Concert! They keep getting better and better!

For more information regarding the spectacular *Dennis Awe and his mastery of the Lowrey visit his web site at [www.dennisawe.com](http://www.dennisawe.com)*



*Dennis Awe in 1961.  
Has not changed one bit!*

*The August 23, 1961  
Lowrey Concert  
Invitation!*



## 2011 L.I.F.E.

### Just a few reminders and clarifications regarding LIFE.

- L.I.F.E. Rewards Redemption** - Redemptions will no longer be accepted after November 18, 2011. Redemptions need to be postmarked no later than November 18 to qualify.
- L.I.F.E. Rewards Redemption** - Due to the recent high volume of requests for redemptions we have experienced longer service lead times. Thank you for your continued patience.
- L.I.F.E. Membership Cards** are being retired for new and renewing members.
- New L.I.F.E. Members** - When ordering the Members' Only Discounted EZ Play Songbooks use member #37300.

### Change of Address for Lowrey & L.I.F.E.:

Jacqueline Mavros, Lowrey L.I.F.E., 847 N. Church Court, Elmhurst, IL 60126-1036



Email Dennis and Joyce Kaplan at [chapterpres@lowrey.com](mailto:chapterpres@lowrey.com) to begin receiving the electronic Chapter Update. Have a great LIFE story and some photos to share? Dennis, Joyce and Tom, the LIFE leadership team, would love to have them and get them published for all to enjoy!

# Jim Reeves

by: Bil Curry



*I was recently asked by a Jim Reeves fan about setting up her Lowrey to capture his unique sound. Here is some background and some setup suggestions that I hope all of you enjoy!*

James Travis “Jim” Reeves (August 20, 1923 – July 31, 1964) was an American country and popular music singer-songwriter also known as “Gentleman Jim”. His songs continued to reach the charts for years after his death (Reeves died at age 40 in a private airplane crash). He is a member of both the Country Music and Texas Country Music Halls of Fame. Below are some of his most popular songs and suggestions on how to set them up on a Lowrey.

## Put Your Sweet Lips Closer to the Phone

- Country Waltz – Rhythm Preset 0 - Use Intro 2 when you have it.

## Have I Told You Lately That I Love You

- BASIC Big Band – Country Category #1 (or any other you like)
- Use the Keypad & press 1-2-6 and then touch the Orch Plus button.

*This will put a Country Guitar in the accompaniment (mostly Intro/Ending).*

## You’re the Only Good Thing That Happened to Me

- Country Waltz – Again use Intro 2 and try Rhythm Preset 6.
- Touch the top of the screen (Edit Style) and turn off Orch+ 2, 3, & 4.
- Save this to a Bank preset and the setting below to another Bank preset.
- Press Rhythm Preset 9 and turn Orch+ 2, 3, & 4 back on.

*Use this setting when you repeat the song.*

## Welcome to My World

- EZ Country + Alter Style button (in the Country 2 button or press Next in the style display window on the Sterling or Imperial).

1. Turn OFF the blue Lower button for the Solo sounds
2. Press 40 (Vibes) on the Keypad and touch the red Orch. Genius 2 button.
3. While holding the Orch. Genius 1 button, press Orch. Genius 2 so that Orch 1 is solid and Orch. 2 is flashing.
4. Play an arpeggio up on the Lower Right (Vibes sound) based on the key (last chord) of the song. Slow down for those last two notes of each chord.

If F then C-F-A-C—F—A

If C then G-C-E-G—C—E

If G then D-G-B-D—G—B

5. Play the notes for the lyrics “Welcome to my world . . .” and on the word “world” play the chord which will start the style.

Save this to a Bank Preset (with Style) and name it so you can easily find and play it this way again.

*I think you’ll get a wonderful feeling playing these sweet old country songs.*



# Improvise, Noodle, and Jam

by: Jim Wieda



Improvisation, also known as *Musical Extemporization*, is now accessible to everyone on a Lowrey.

While the terms *Improvise* and *Musical Extemporization* sound complicated, those of us that play on a Lowrey are free from intimidation or anxiety.

Lowrey smart technology allows us to play in a conventional mode or we can skip the years of practice and music theory study. Both paths lead to musically correct results and the Lowrey responds without changing any control parameters or feature setups to various styles of play. *For example, left hand accompaniment chords can be played conventionally or the easy way-both give you the same sound. Bass accompaniment can be played on the pedals or auto bass can play for you.*

Lowrey also adds beautiful orchestrated background styles to our music and adds improvisational elements to these styles with the FX/Fill feature. Ingenuity does not stop there, however, as Lowrey now gives us a great feature that makes the world of musical improv easy and fun to explore.

The Virtuoso can bring a whole new element to your music making. Try Virtuoso improv by selecting the Soft and Easy, or Ballad style. Simply play the chords in your song as written but instead of playing the melody, randomly touch notes on the Virtuoso. This is different than playing an arpeggio with the virtuoso. Instead of gliding a finger across the keyboard, randomly play in different sections. *The virtuoso only will play notes within the chord being played in the chord section. You cannot play an incorrect note.* This technique is fun to use when you come to a passage in a song that you don’t like to play or for a welcome change of pace with your music. One of my favorite rhythm styles for this feature is “Johnny Chances”. At the bridge of a song, strike notes on the virtuoso randomly and listen to a great improv coming from you! You will notice that the sounds from the Virtuoso will change with rhythm presets. You may change the sound being played in the Virtuoso by pressing the Genius button next to the Golden Harp. The sound will be displayed in the screen and you may scroll to select.

